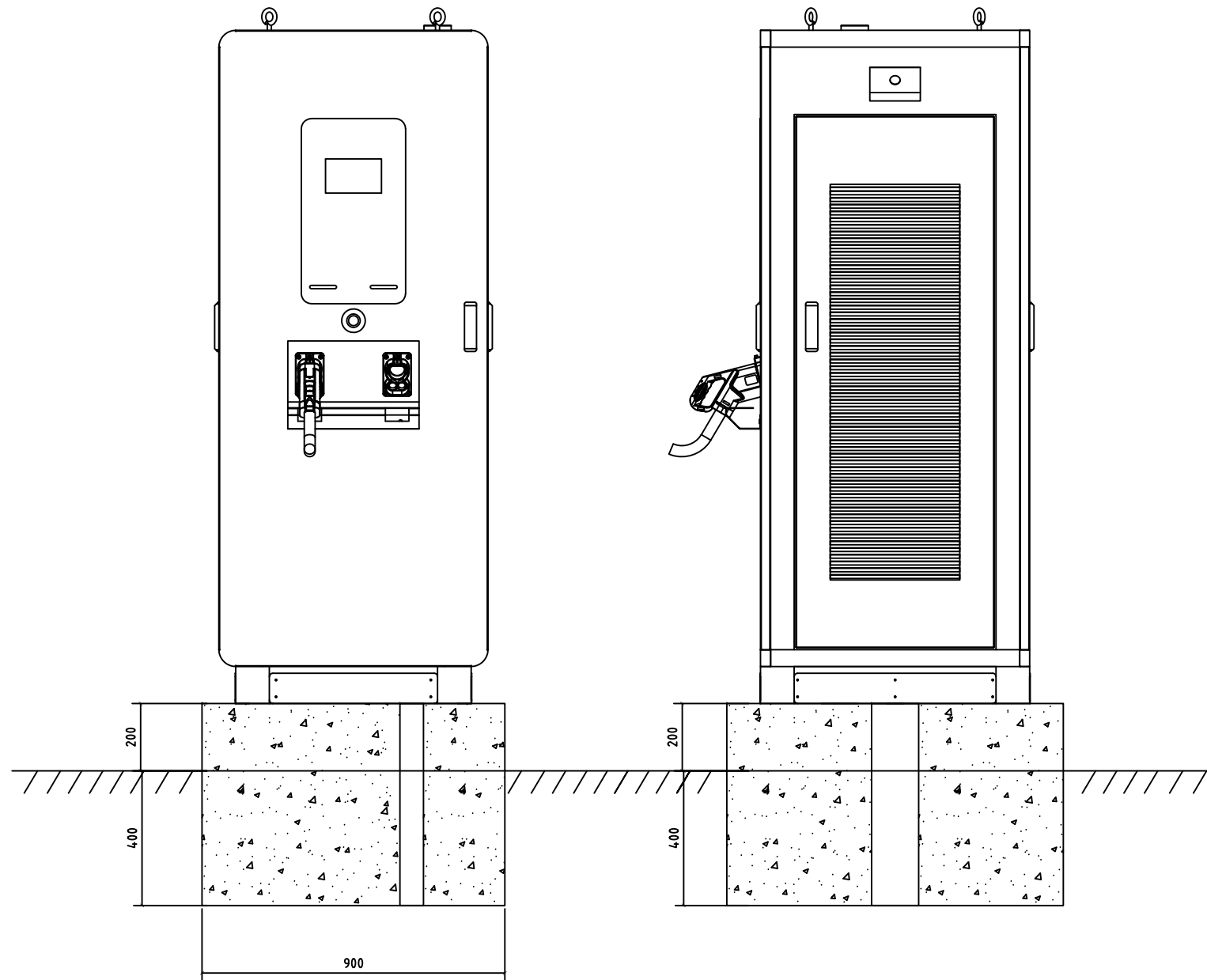
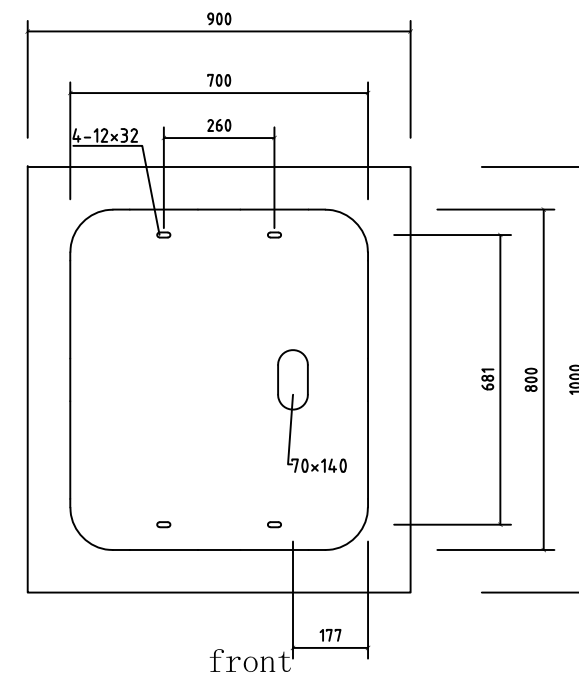


## Installation instructions

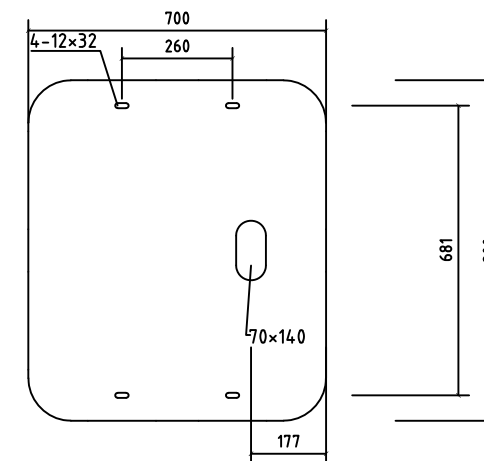


## Pre-embedded piping for concrete foundations

Φ 70



Concrete foundation pre-embedded pipe  
opening location



## Installation hole map

unit: mm

Construction requirements:

1、the concrete is not less than C20, with underground part 40cm, and above ground part 20cm. Concrete size is L \* W \* H 900 \* 1000 \* 600mm; appearance is complete and flat, no cracks; base outer contour is 700\*800mm. After the equipment is installed, the four edges of the base are 100mm away from the four edges of the foundation;

2、The pre-embedded pipeline should be in line with the opening position of the base board of the EV charger, which avoids the problem of inconsistency between the pipeline and the opening hole, thus making it impossible to construct;

3、The installation is fixed by  $\phi 12$  pre-embedded parts or expansion bolts, stainless steel or hot-dip galvanised;

4、the basement does not allow excavation for pre-embedding, the foundation depends on the situation;

5、The size reserved behind the cabinet during installation should be greater than or equal to the width of the cabinet.

[illegible]